



Quick Bid 4.99.5 Spring 2022 Release

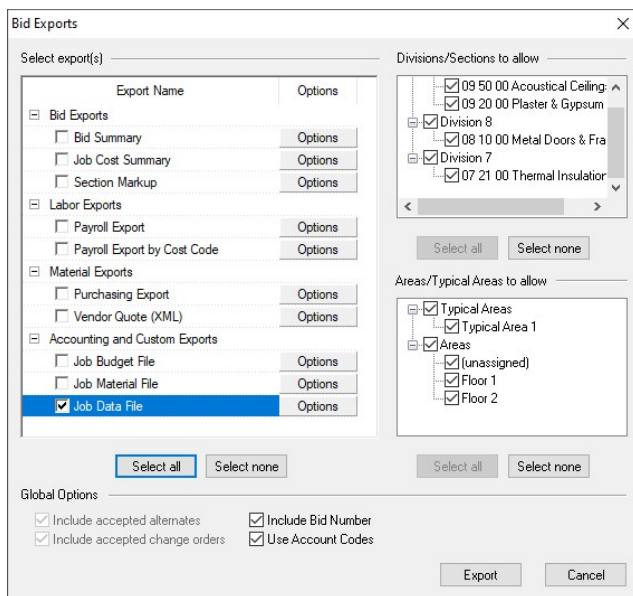
Contents

- Features 2
 - Job Data File (generic Accounting) Export 2
- Changes 3
 - Removed Registration Screen 3
 - Analytics Opt-in 4
 - Accounting and Custom Exports 5
- Fixes 7
 - Reported by Customers 7
 - Found during QA Normal Testing 8
- Known Issues 8

Features

Job Data File (generic Accounting) Export

Although Quick Bid includes several customized exports for several popular Accounting packages, we can't create exports for every Accounting package in the market, so we created a more "generic" export that you can manipulate quickly in your favorite spreadsheet program and then import. The new Job Data File export is a COST export that includes Tax and Burdens, but does not include Overhead and Profit.



The export is a CSV file that can be edited in any spreadsheet application (Excel, Sheets, Lotus 1-2-3, etc).

Important Notes:

- 1.) These are COSTS and do not include Overhead or Profit
- 2.) Tax and Burden ARE exported as separate line items
- 3.) Custom Category Codes are ignored by this export – all Costs are assigned M, L, S, E, or O (Material, Labor, Subs, Equip, or Other) cost “type” codes.

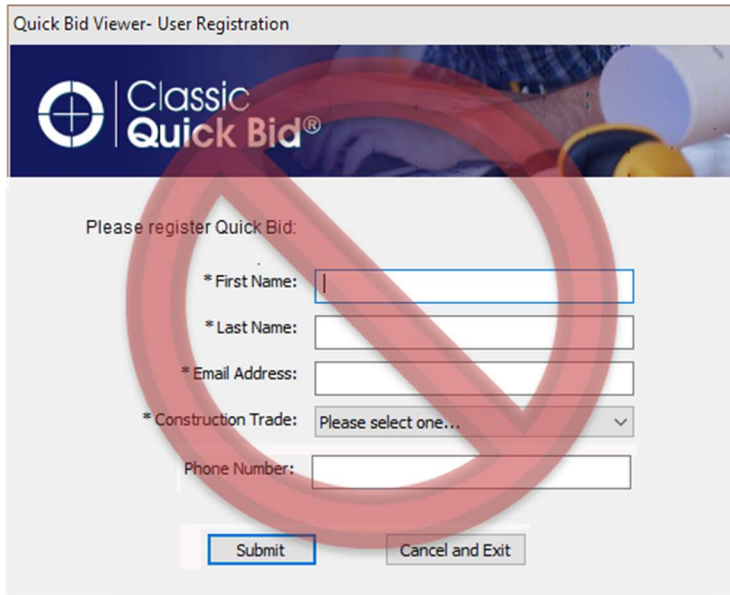
For help on editing a CSV file as a spreadsheet, see your spreadsheet’s Help or Support.

See the User Guide article for details: <https://kbase.oncenter.com/kbase/Article/AA-04879>

Changes

Removed Registration Screen

In compliance with new privacy regulations imposed by the European Union and California, we have removed the Registration Screen that prompted users for some basic information, required before they could use the application.

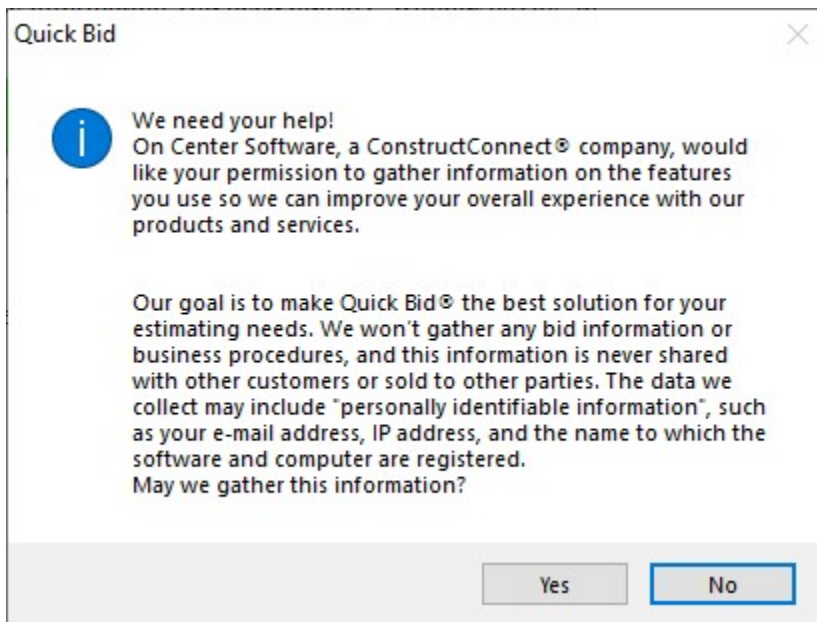


Quick Bid Registration screen - removed

Information required to provide licensing and other services may still be collected, but this information is never shared with outside parties and is only collected to ensure license integrity.

[Analytics Opt-in](#)

When you first launch Quick Bid 4.99.05, you're going to see a prompt to opt-in to data analytics.

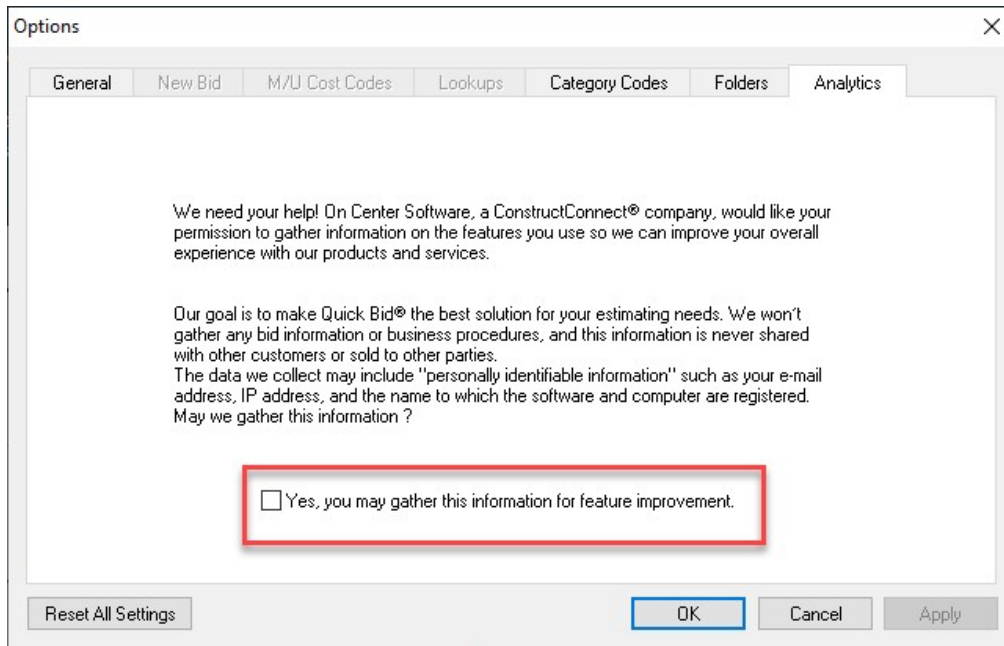


Quick Bid Analytics Opt-In Prompt

If you would like to share generalized usage information (which features you use, never your bid information or data), you can opt-in by clicking Yes.

If you are a resident of California or the European Union, at this time, you will be opted-out during this process automatically.

If you opt out (click No), you can always change your mind and opt-in by clicking *Tools > Options > Analytics* and checking the box.

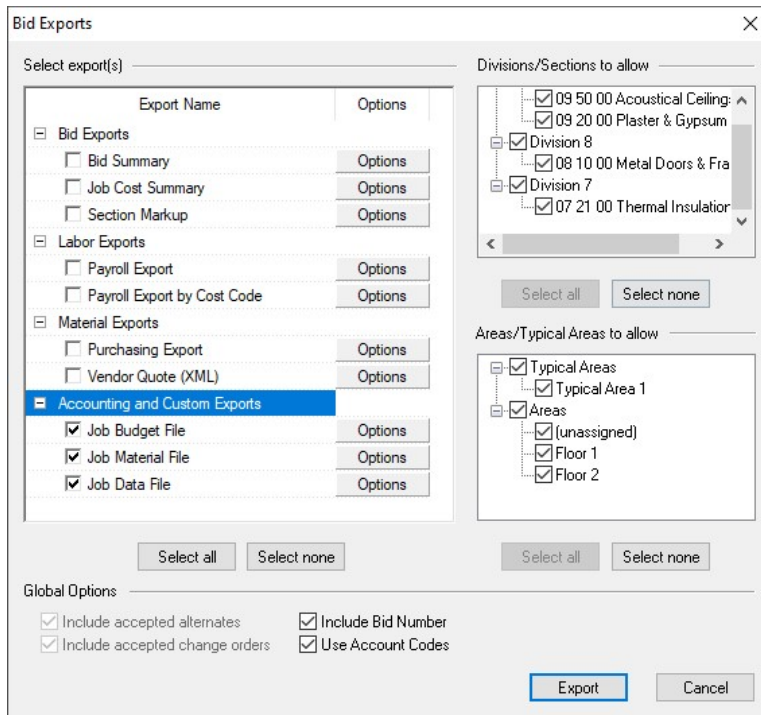


Quick Bid Options dialog box – Analytics tab

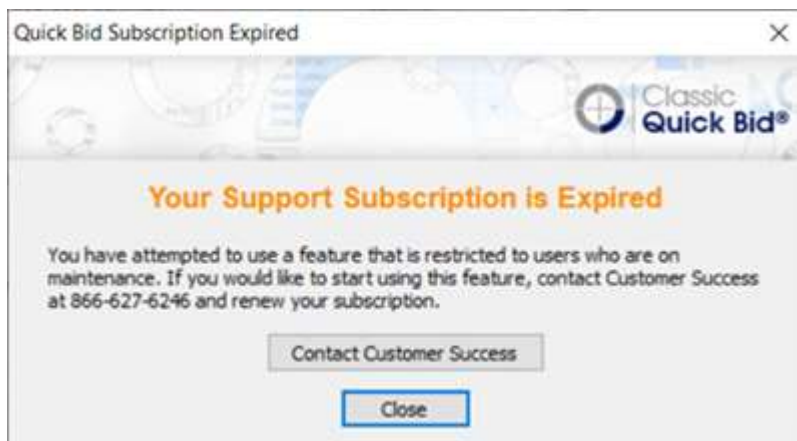
We never sell or share your information with anyone outside the ConstructConnect Product & Development team. Your bid/project data (including Master data) is never shared with ConstructConnect, just the way you use the projects is gathered to inform our Product team on those features our customers use the most.

[Accounting and Custom Exports](#)

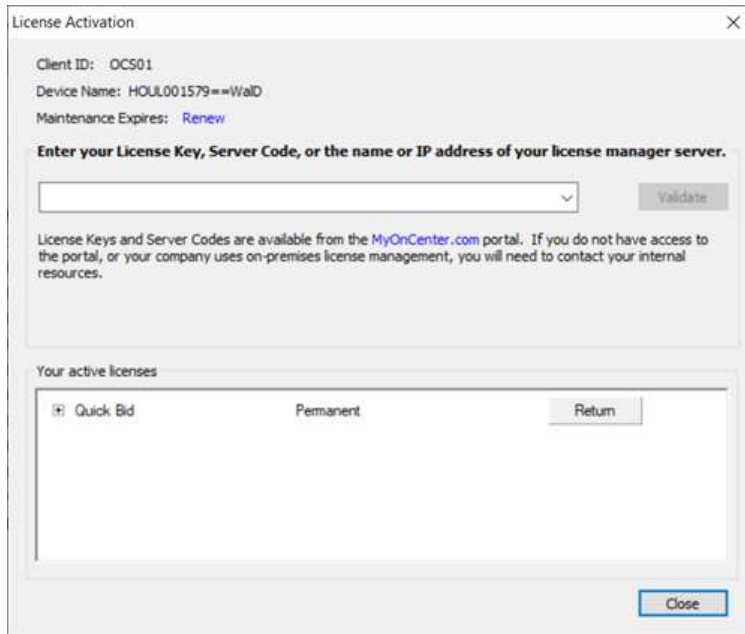
Starting with this release, all Accounting and Custom Exports will be available only to users who remain under a maintenance subscription.



If you've allowed your maintenance subscription to lapse, you'll see a pop-up prompting you to contact our Customer Success group to work on getting back "on maintenance".



If you click on "Contact Customer Success", you'll be taken to an article that will help you get in touch with ConstructConnect to renew right away. You can also click the [Renew](#) button in your License Activation screen.



Fixes

Reported by Customers

- ON-727/ON-4131 (Support Case # 384771) - an Item's Style changes in a Mixture when the price is updated
- ON-1795 (Support Case # 398728) - Copying and Pasting Takeoff with pricing from the Base Bid to a new Change Order sometimes does not retain pricing from Base Bid (requires fix in OST)
- ON-2609 - Program crashes if you change the Qty/Day column on the Labor Tab in an Alternate in an interactive Bid
- ON-3331 - In a Bid with no Net Labor costs, overriding the Bid Total on the Markups Tab does not work
- ON-3427 (Support Case #s 01896547, 0201982) - When a database contains 1,000 eQuotes, the eQuotes grid becomes unusable
- ON-3686/ON-3727 (Support Case # 01981801) - The Job Cost Export does not export Manhours or Production correctly
- ON-3850 (Support Case # 02150088) - Accepting/Unaccepting Subcontractor quotes causes the Total row to calculate incorrectly
- ON-3880/ON-4147 - ComputerEase Export is not formatting alpha-numeric as Text
- ON-4032 - Incorrect highlighting is applied to the grid when it is Filtered (display issue only)
- ON-4125 - the Totals row's cells are misaligned in the Condition/ Detail Items Grid
- ON-4170 - the Total line on the Payroll Tab does not calculate correctly where there is negative Labor in a bid

Found during QA Normal Testing

- ON-727/ON-4131 (Support Case # 384771) - an Item's Style changes in a Mixture when the price is updated
- ON-1795 (Support Case # 398728) - Copying and Pasting Takeoff with pricing from the Base Bid to a new Change Order sometimes does not retain pricing from Base Bid (requires fix in OST)
- ON-2609 - Program crashes if you change the Qty/Day column on the Labor Tab in an Alternate in an interactive Bid
- ON-3331 - In a Bid with no Net Labor costs, overriding the Bid Total on the Markups Tab does not work
- ON-3427 (Support Case #s 01896547, 0201982) - When a database contains 1,000 eQuotes, the eQuotes grid becomes unusable
- ON-3686/ON-3727 (Support Case # 01981801) - The Job Cost Export does not export Manhours or Production correctly
- ON-3850 (Support Case # 02150088) - Accepting/Unaccepting Subcontractor quotes causes the Total row to calculate incorrectly
- ON-3880/ON-4147 - ComputerEase Export is not formatting alpha-numeric as Text
- ON-3910 (Support Case # 02049577) - Several actions cause the Materials Grid and the eQuotes Grid to reload themselves, causing user's focus to be lost
- ON-4032 - Incorrect highlighting is applied to the grid when it is Filtered (display issue only)
- ON-4125 - the Totals row's cells are misaligned in the Condition/ Detail Items Grid
- ON-4170 - the Total line on the Payroll Tab does not calculate correctly where there is negative Labor in a bid

Known Issues

Not an "issue", just an FYI: the Global Export options "Include Bid Number" and "Use Account Codes" do not affect the new Job Data File export.